

LARS2 Antibody (Center)
Purified Rabbit Polyclonal Antibody (Pab)
Catalog # AP11098c**Specification**

LARS2 Antibody (Center) - Product Information

Application	WB, FC,E
Primary Accession	Q15031
Other Accession	NP_056155.1
Reactivity	Human
Host	Rabbit
Clonality	Polyclonal
Isotype	Rabbit IgG
Calculated MW	101976
Antigen Region	418-446

LARS2 Antibody (Center) - Additional Information**Gene ID** 23395**Other Names**

Probable leucine--tRNA ligase, mitochondrial, Leucyl-tRNA synthetase, LeuRS, LARS2, KIAA0028

Target/Specificity

This LARS2 antibody is generated from rabbits immunized with a KLH conjugated synthetic peptide between 418-446 amino acids from the Central region of human LARS2.

Dilution

WB~~1:1000

FC~~1:10~50

E~~Use at an assay dependent concentration.

Format

Purified polyclonal antibody supplied in PBS with 0.09% (W/V) sodium azide. This antibody is prepared by Saturated Ammonium Sulfate (SAS) precipitation followed by dialysis against PBS.

Storage

Maintain refrigerated at 2-8°C for up to 2 weeks. For long term storage store at -20°C in small aliquots to prevent freeze-thaw cycles.

Precautions

LARS2 Antibody (Center) is for research use only and not for use in diagnostic or therapeutic procedures.

LARS2 Antibody (Center) - Protein Information**Name** LARS2 ([HGNC:17095](#))

Synonyms KIAA0028

Function Catalyzes the attachment of leucine to its cognate tRNA.

Cellular Location

Mitochondrion matrix.

Tissue Location

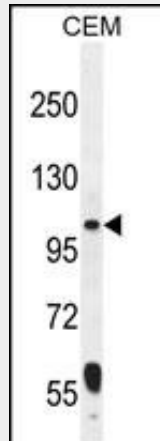
Ubiquitously expressed, but highest expression in tissues with high metabolic rates, such as skeletal muscle, heart, and kidney.

LARS2 Antibody (Center) - Protocols

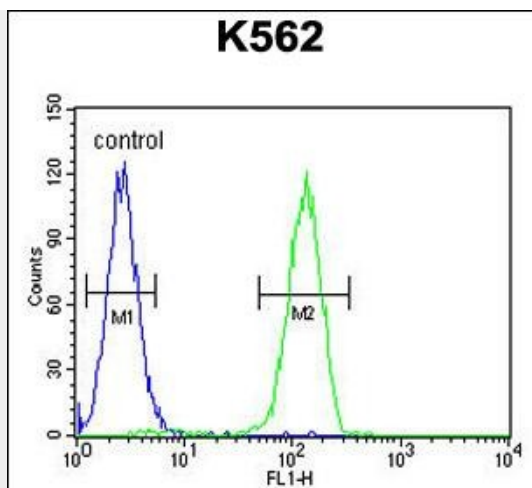
Provided below are standard protocols that you may find useful for product applications.

- [Western Blot](#)
- [Blocking Peptides](#)
- [Dot Blot](#)
- [Immunohistochemistry](#)
- [Immunofluorescence](#)
- [Immunoprecipitation](#)
- [Flow Cytometry](#)
- [Cell Culture](#)

LARS2 Antibody (Center) - Images



LARS2 Antibody (Center) (Cat. #AP11098c) western blot analysis in CEM cell line lysates (35ug/lane). This demonstrates the LARS2 antibody detected the LARS2 protein (arrow).



LARS2 Antibody (Center) (Cat. #AP11098c) flow cytometric analysis of K562 cells (right histogram) compared to a negative control cell (left histogram). FITC-conjugated goat-anti-rabbit secondary antibodies were used for the analysis.

LARS2 Antibody (Center) - Background

This gene encodes a class 1 aminoacyl-tRNA synthetase, mitochondrial leucyl-tRNA synthetase. Each of the twenty aminoacyl-tRNA synthetases catalyzes the aminoacylation of a specific tRNA or tRNA isoaccepting family with the cognate amino acid.

LARS2 Antibody (Center) - References

Li, R., et al. Mol. Cell. Biol. 30(9):2147-2154(2010)
Reiling, E., et al. Diabetologia 53(1):103-110(2010)
Zhou, W., et al. Acta Biochim. Biophys. Sin. (Shanghai) 41(1):54-62(2009)
Park, H., et al. RNA 14(11):2407-2416(2008)
't Hart, L.M., et al. Diabetes 54(6):1892-1895(2005)